

sip

newsletter

Donald W. Roberts

society for invertebrate pathology

Volume 16, Number 1
February 1984

SOCIETY FOR INVERTEBRATE

PATHOLOGY XVII ANNUAL MEETING

University of California, Davis
August 5-9, 1984

The University of California, Davis, is looking forward to hosting the Seventeenth Annual Meeting of the Society for Invertebrate Pathology. The following information is intended to facilitate your planning for this meeting.

THE CAMPUS

UC Davis is part of the nine-campus University of California. Founded in 1905 as the University Farm, Davis was designated a general campus of the University in 1959. In the sixties, a decade of tremendous expansion, enrollments at Davis increased five-fold. Today, the campus is the third largest in the UC system with over 18,000 students, about 5,000 of them seeking graduate and professional degrees. The total campus comprises approximately 3,800 acres, including a University airport, and the teaching hospital, located in Sacramento, for the School of Medicine. About 980 acres are devoted to the central campus, the remainder being used primarily for agricultural research.

The Davis campus has undergraduate colleges of Agricultural and Environmental Sciences, Engineering, and Letters and Science, offering 73 different majors. The Graduate Division administers 69 advanced degree programs and research at all schools and colleges. Professional studies are carried on at the schools of Law, Medicine, and Veterinary Medicine.

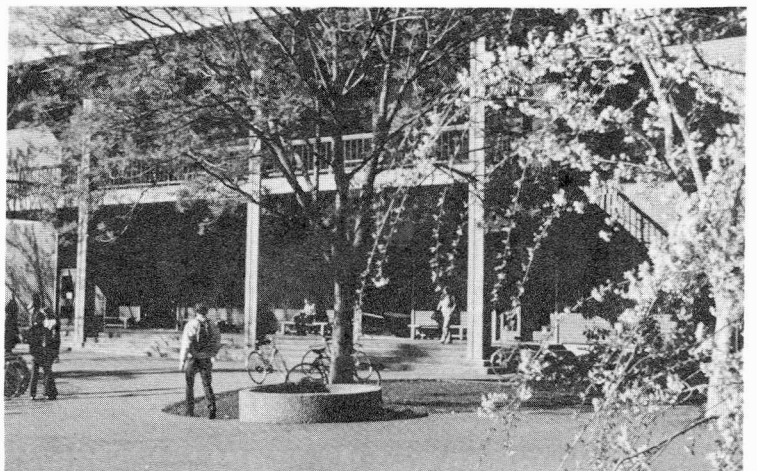
A deserved reputation as a fine agricultural school has belonged to UC Davis since its beginning. In recent years, however, the reputation of the Davis campus in many other fields has advanced as Davis has moved into the ranks of the top 25 research universities in the United States.

DAVIS AND NORTHERN CALIFORNIA

Davis is located in the Sacramento Valley, 15 miles west of Sacramento and 72 miles northeast of San Francisco. Sacramento, with all its resources as the State Capitol, is only 20 minutes away, yet Davis is surrounded on all sides by open space - including some of the most valuable agricultural land in the State.

Davis is world renowned for its support of energy conservation. Building ordinances encourage energy efficiency and the use of solar energy in residential and commercial buildings. The City of Davis and the University

provide over 30 miles of bicycle lanes to accommodate a bicycle population estimated at 30,000. Bicycle rentals are available from local bicycle shops.



WELLMAN HALL, UNIVERSITY OF CALIFORNIA
WHERE MEETINGS WILL BE HELD

Davis' central location and moderate climate make it an ideal location for a family vacation as well as a conference site. Within a 20-mile radius are Lake Berryessa and the Sacramento River, offering a variety of water sports. For those who enjoy the mountain scenery, the Sierra Nevada is two hours to the east. The foothills are home to the historic Mother Lode country, full of the fables and folklore of the California Gold Rush days. Further up the mountains is world-famous Lake Tahoe offering spectacular scenery, resort areas, nightclubs, and casinos.

San Francisco, famous for its cosmopolitan atmosphere, is only a 90-minute drive to the west. Excellent shopping, restaurants, theater, and museums--with the Pacific Ocean and the Bay almost always within view--make this an excursion the entire family will enjoy. No visitor to San Francisco should miss the well-known tourist attractions of Chinatown, Fisherman's Wharf, the California Academy of Sciences' Steinhart Aquarium and Golden Gate Park.

Berkeley, home of the oldest campus in the University of California system, is an hour drive west along Highway 80. The Napa Valley Wine Country, a scenic 90-minute drive to the west, can provide a pleasant day touring the dozens of wineries, wine tasting, and picnicking. Lassen National Park and Lake Shasta to the north and Yosemite National Park to the southeast all can be reached within a day's drive.

TRANSPORTATION

A. AIR TRAVEL: Air travel is most convenient into the Sacramento Metropolitan Airport. Sacramento is served by several major airlines with connecting flights to both San

San Francisco and Los Angeles. Davis is located approximately 25 miles from the airport.

University Limousine offers daily scheduled trips directly from Sacramento Metro Airport and the University campus (and nearby motels). The service charges \$9.00 per person, one way, to residence hall (Tercero), and can be reached for schedules and information by calling (916) 756-2780. Departure from Sacramento Airport is from the PSA/Western Terminal. Currently, Monday-Friday departures to Davis are from 9:15 am, 11:15 am, 12:55 pm, 2:50 pm, 4:40 pm, 6:35 pm, 8:10 pm and 9:20 pm. Saturday departures occur at 9:15 am, 11:15 am, 12:55 pm, 2:50 pm and 4:40 pm. Sunday departures start at 11:15 am, 12:55 pm, 2:50 pm, 4:40 pm, 8:10 pm, 9:20 pm and 10:55 pm. From Davis to Sacramento Airport, departures start at 5:45 am and at 1-2 hour intervals thereafter.

B. CAR RENTALS: There is one rental agency in Davis. Hertz can be contacted by calling (916) 758-8000.

Car rentals are also available both at the Sacramento Metro Airport and in downtown Sacramento. Advance reservations are strongly recommended.

RENTAL	PHONE NUMBER
Avis	(916)922-5601
Budget	(916)922-7315
Hertz	(916)927-3882
National Car Rental	(916)927-3644

C. BUS/TRAIN: Greyhound, (916) 753-2485, schedules buses through Davis several times a day (the station is on First Street) with connections to Sacramento, San Francisco, and Los Angeles. Amtrak, (916) 753-6300, serves Davis (the station is located at Second and H Streets) with connections north to Portland and Seattle and south to Los Angeles. Commuter Bus Lines, (916) 756-2877, offers bus services between Davis and the greater Sacramento area.

D. PRIVATE CAR: Davis is located on Interstate Highway 80, 15 miles west of Sacramento and 72 miles northeast of

SIP NEWSLETTER

The SIP Newsletter is produced four times a year by the Society for Invertebrate Pathology. Annual dues (U.S. funds) in the Society are: regular members, \$11.00; and students, \$4.00. Members receive the SIP Newsletter free. Application forms for Membership in the Society may be obtained from the Treasurer, Dr. Aaron Rosenfield, Oxford Lab., NOAA, Nat'l. Marine Fisheries Service, Oxford, Maryland 21654, U.S.A.

Council Officers of the Society are:

President	Wayne M. Brooks, USA
Vice President	H. Denis Burges, England
Past President	Phyllis T. Johnson, USA
Secretary	Jean R. Adams, USA
Treasurer	Aaron Rosenfield, USA
Trustees	Terry L. Couch, USA
	John E. Henry, USA
	Peter Lüthy, Switzerland
	Hitoshi Watanabe, Japan

Send news items and other contributions to:

Sardar S. Sohi, Editor
SIP Newsletter
Forest Pest Management Inst.
Canadian Forestry Service
P.O. Box 490
Sault Ste. Marie, Ontario Canada P6A 5M7

Instructions for Preparing Camera Ready Copy:

The SIP Newsletter is produced by offset printing. For general format follow a recent copy of the Newsletter. Type single spaced. Width of typed material should be no more than five inches, but use most of this width to conserve space. Thank you.

San Francisco. Interstate Highways 5 and 99 both connect to I-80 in Sacramento. Take the I-80 freeway exit marked "Davis" to reach downtown. To reach the campus, you may drive through the adjacent town of Davis or take the "University of California" exit off I-80. Daily parking permits are required on the campus on weekdays and evenings; the fee is 50 cents per day. You may purchase parking permits at the Registration Headquarters; there are also several self-serve pay lots (quarters only).

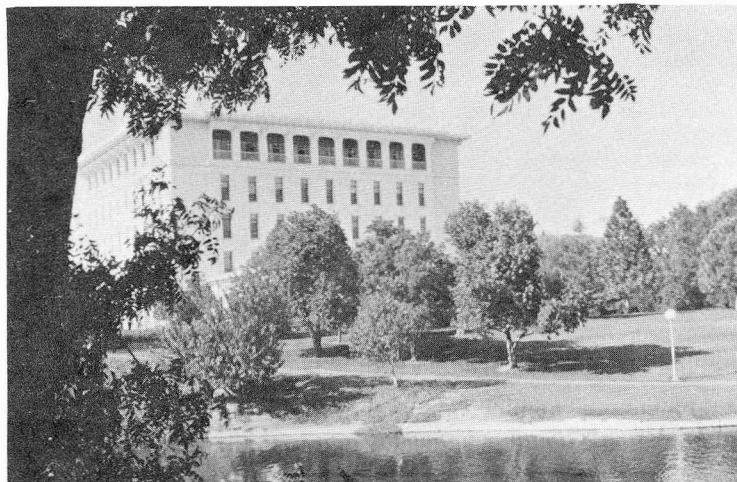
The central University campus is closed to motor vehicles; automobile parking lots are located on the perimeter of the campus. All conference activities are within easy walking distance from both dormitories and nearby motels.

OFF-CAMPUS HOUSING

A. MOTELS: There are five motels in Davis (see chart below). Motel accommodations are extremely limited in Davis. (Prices are current as of October 1983; they are subject to change. There is also a 10% sales tax [not included].) Note that Motel 6 will accept only cash, money orders, and checks; no credit cards. There are quite a few motels in West Sacramento, only a 15-minute drive from Davis.

DAVIS MOTEL INFORMATION

	Phone Area Code (916)	Rate	Distance from Campus
Davis, CA 95616			
Campus Welcome Inn 221 D Street	756-1040	\$30-\$38	3 blks
Davis Motel 1111 Richards Blvd.	756-0910	\$26-\$32	6 blks
Motel 6 4836 Chiles Road	756-6662	\$16-\$23	3 mi
Best Western Davis Motel Lodge 4120 Chiles Road	756-2200	\$34-\$39	2.5 mi
University Lodge 123 B Street	756-7890	\$35-\$59	1 blk



MRak HALL, (ADMINISTRATION BUILDING)
UNIVERSITY OF CALIFORNIA, DAVIS

B. CAMPING: Camping, or staying in recreational vehicles overnight, is prohibited on the University campus. You may of course park your recreational vehicle on the campus while you are staying in the dormitories or attending the meetings. The closest campground in the Davis area is the Sacramento KOA, a 15-minute drive on Interstate 80 (take the West Capitol Avenue exit off I-80). The campground is equipped with complete bathroom, laundry, and recreational

facilities. Sewer, water, and electrical hook-ups are available. KOA is located at 4851 Lake Road, West Sacramento, CA 95616; (916)371-6771. Reservations are strongly recommended during the summer months.

RECREATIONAL FACILITIES

A wide range of recreational facilities are available both on-campus and within Davis including tennis courts, swimming pool, fishing, golf, etc.

RESTAURANTS

Davis offers over 30 restaurants. Spread throughout the town are Chinese restaurants, Italian restaurants, Japanese restaurants, Mexican restaurants, a Greek restaurant, sandwich shops and fast food restaurants. Upon arrival see the Yolo County phone book for restaurant listings.

EMERGENCY NUMBERS

UCD POLICE DEPARTMENT.....752-1230
CITY OF DAVIS POLICE DEPARTMENT.....758-3600
UCD FIRE DEPARTMENT.....752-1234
CITY OF DAVIS FIRE DEPARTMENT.....756-3400
UCD AMBULANCE/HEALTH CENTER.....752-2300
SUTTER HOSPITAL.....756-6440

MESSAGES

Messages can be left at the registration desk (916)752-6791 or at the Department of Entomology, Davis, in care of Harry Kaya (916)752-0475.

DRESS

August in Davis can be hot (90-100°F) with cool evenings (50-70°F). Usually, the air is dry and rainfall is at a minimum. The campus is large and the distance from the dorms to the meeting room is about a 10-minute walk, so be sure to wear comfortable walking shoes. Casual clothing is in order, with a sweater or light jacket for evening. Swimsuits will be in order to enjoy the swimming pool on campus which is located about a 5-minute walk from the dorms.

REGISTRATION

Registration is scheduled from 3:00 pm - 10:00 pm on Sunday, August 5, 1984, at the Tercero Residence Hall on the University of California Campus. It will continue on Monday from 8:00 am - 5:00 pm in the lounge at Wellman Hall which is our meeting site. The conference will conclude on Thursday afternoon, August 9.

Registration is: before July 6, 1984
Members \$40.00
Students \$20.00
after July 6, 1984
Members \$50.00
Students \$30.00

REFUND POLICY

The Society will refund advance registration fees (less a \$5.00 handling fee) for all cancellations received in writing or by telegram on or prior to Friday, July 27, 1984. NO REFUNDS WILL BE GRANTED AFTER THIS DATE. Refunds will be mailed from the Society's campus office following the Annual Meeting. Refund policy for housing is detailed under On-campus Accommodations and Meals.

ON-CAMPUS ACCOMMODATIONS AND MEALS

Arrangements have been made to accommodate conference participants and their families in the residence halls on the U.C. Davis campus. Two package plans, including accommodations and meals, have been designed specifically for the Society for Invertebrate Pathology Meeting.

Conference participants may choose to arrive on Sunday, August 5 (PLAN A) or Monday, August 6 (PLAN B). The departure date for both plans is scheduled for Thursday, August 9. A limited amount of space is available on campus; therefore, reservations will be accepted on a first-come first-served basis.

All rooms are comfortably air-conditioned and are located within walking distance to the SIP meetings. Both single and double accommodations are available. Single rooms are limited in number and will be assigned as reservations are received. Most rooms are designed for double occupancy (two single beds). All bath facilities are shared by either a suite (4-5 guests) or a floor (15-25 guests). The central floor baths will be marked for either male or female use. For married couples, it will be necessary for one person to walk to the floor above or below to use the appropriate bath. All rooms have single beds only. Private baths are not available.

Beds will be made prior to arrival for adults, and a bedroll of linen will be provided for youth and children. A towel set, complimentary bar of soap and cup are provided for each guest. Fresh towels will be exchanged daily, but maid service is not included. Each room has a telephone with local dialing and long distance receiving capabilities. Pay phones are available in public areas. Coin operated washers and dryers are located in each residence hall. Daily access to the University Recreation Pool is included in the accommodations package rate.

Package rates have been developed for Adults, Youth (11-17 years of age), and Children (10 years and under). Children may sleep in their parents room at no room cost if a sleeping bag is provided by the family. Children using a bed will be charged the room and board package rate. All children are charged half-price for the meal portion of the package. There is no charge for infants with their own food supply. Please indicate the names and ages of all children on the Reservation Form.

Meals are served cafeteria style in the Dining Commons, located adjacent to the residence halls. The meal program offers a wide variety of hot and cold entrees, excellent salad bar, choice of fresh fruits, desserts and beverages at lunch and dinner. Both hot and continental breakfasts are served. Unlimited seconds are offered on most items. Bag lunches are available from the Dining Commons, at no additional charge, when requested 24 hours in advance. The package rates do not include dinners on Tuesday or Wednesday nights, since special functions have been planned for these evenings and tickets must be purchased separately. If not attending social functions, meals can be purchased separately at the Dining Commons.

The package plans include accommodations and meals as specified below:

PLAN A: Sunday, August 5 - Thursday, August 9, 1984

Check-in: Sun., August 5 2:00pm-9:00pm
Meals: Sun., August 5 Opening Reception (7:00pm-9:00pm)
Mon., August 6 Breakfast, Lunch, Dinner
Tue., August 7 Breakfast, Lunch
Wed., August 8 Breakfast, Lunch
Thur., August 9 Breakfast, Lunch
Check-out: Thur., August 9 prior to 2:00 p.m.

PLAN B: Monday, August 6 - Thursday, August 9, 1984

Plan B begins with check-in on Monday, August 6, with Lunch as the first meal. All other meals and check-out are the same as Plan A.

Package rates for PLAN A and PLAN B are outlined on the Conference Accommodations and Meals Reservation Form. To reserve accommodations, please complete the Reservation Form. Due to space limitations, reservations must be made

in advance and accompanied by full payment. All charges must be paid in United States currency by traveler's check, personal check or money order. Please mail the Reservation Form with payment directly to the U.C. Davis Summer Housing Office. Reservations must be postmarked by July 6, 1984, or a Late Reservation Fee of \$5.00 per person must be added. Confirmation of reservations will be mailed, including a campus map and information regarding check-in. Full refunds will be issued only if requested by July 27, 1984. No refunds will be given after this date. Refunds requested after June 1 may not be processed until after the conclusion of the conference. We regret that should a guest choose to leave prior to the end of the Conference, a refund will not be issued.

Please indicate on the Reservation Form if you have a disability that will require special arrangements such as ground floor accommodations or wheelchair access to buildings. There are no elevators in the residence halls, but one is available in the Dining Commons. Guests must submit separate Reservation Forms, and request one another as roommates to be assigned to the same room. Otherwise, random assignments will be made. Families and married couples may submit one Form.

Please complete the Reservation Form and return it to the address provided. Should you need further information, please contact Kathleen Biaggi, Coordinator of Summer and Conference Housing, at (916) 752-8000.

SOCIAL ACTIVITIES

An opening reception will be held in the Tercero Dining Commons from 7-9 pm on Sunday, August 5, 1984. Those housed in the residence hall will have tickets. Those not housed in the residence hall will have to buy tickets. See registration form.

On Tuesday, August 7, a Society Banquet is planned at the UC Faculty Club. The menu will include standing beef roast, two types of salads, jello, potatoes, rolls, dessert and wine. Dancing and/or entertainment will follow the banquet.

On Wednesday, August 8, a BBQ will be held on campus from 5:30-9:30 pm. The menu will include BBQ chicken, baked beans, corn, vegetable salad, potato salad, cornbread, watermelon and refreshments (soft drinks, coffee, tea, and beer).

Plan to attend these social activities.

TOURS

A. WINE TOURS: On Wednesday afternoon, August 8, a trip to wine country is being planned. There will be a tour and wine tasting at two wineries in Napa County. Buses will leave from the residence hall area (Tercero) between 12:15-12:30 pm. A box lunch will be provided for conferees staying in the residence hall and can be picked up before boarding the buses. For conferees not in the residence hall wishing to join the wine tour, a box lunch can be bought (see registration form). The buses will leave promptly at 12:30 and reach the first winery about 2:00 pm. After visiting the second winery, the buses will leave for Davis about 4:00 pm and be back at the Residence Hall about 5:30 pm. The cost for the bus is \$7.00/person. There will be a BBQ on campus starting at 6:00 pm. If there is no sufficient interest in this tour, it will be subject to cancellation.

B. TOUR OF SACRAMENTO: There will be a signup for tours of Sacramento (old Sacramento, governor's mansion, Sutter's Fort, Capitol Building) for spouses. If there is sufficient interest, a tour will be organized during the meeting. The cost will depend upon the number of people signing up for the tour. Cost will be between \$5-\$7; there is a nominal charge (\$1.00 or less) for some of the tours.

C. BODEGA BAY MARINE RESEARCH FACILITY: A tour conducted by Dr. Ron Hedrick is being planned for Thursday, August 9, 1984. This will be an all day affair starting at 8:30 am and returning by 3:30 pm. There will be a signup sheet for those interested in this tour, and the cost will depend upon the number of people signing up for the tour. Lunch will be separate from the transportation cost (transportation cost will be about \$10). If you are interested, please indicate so on the registration sheet.

The Bodega Bay Marine Research Facility is located along the beautiful California coast and is about a two-hour drive from Davis. Ongoing research include endocrinology, genetics, nutrition and pathology on salmon, lobster, sturgeon, oyster, and shrimp. The tour of the facilities will take about 1-2 hours, followed by lunch and the return trip back by 3:30 pm.

ROAD RACE

A 5 km race will be held on campus Wednesday morning, August 9. Special T-shirts are being prepared - see enclosed registration form.

CHILD CARE

A list of babysitters will be available at registration. Participants will be able to make arrangements directly with sitter.

CAUTIONARY NOTE REGARDING FLIGHT ARRANGEMENTS

The Davis SIP Meeting occurs towards the end of the Olympic Games at Los Angeles. Particularly for non-U.S. delegates, this could create a greater airline booking problem than that usually resulting from the holiday season at that time of the year. Therefore, please make your flight reservations well in time.

Persons who wish to take advantage of super saver fares will have to arrange their own accommodation on Saturday, August 4, evening. Dormitory accommodation will not be available till Sunday, August 5, evening.

CALL FOR PAPERS AND ABSTRACTS - DEADLINE, APRIL 15/84

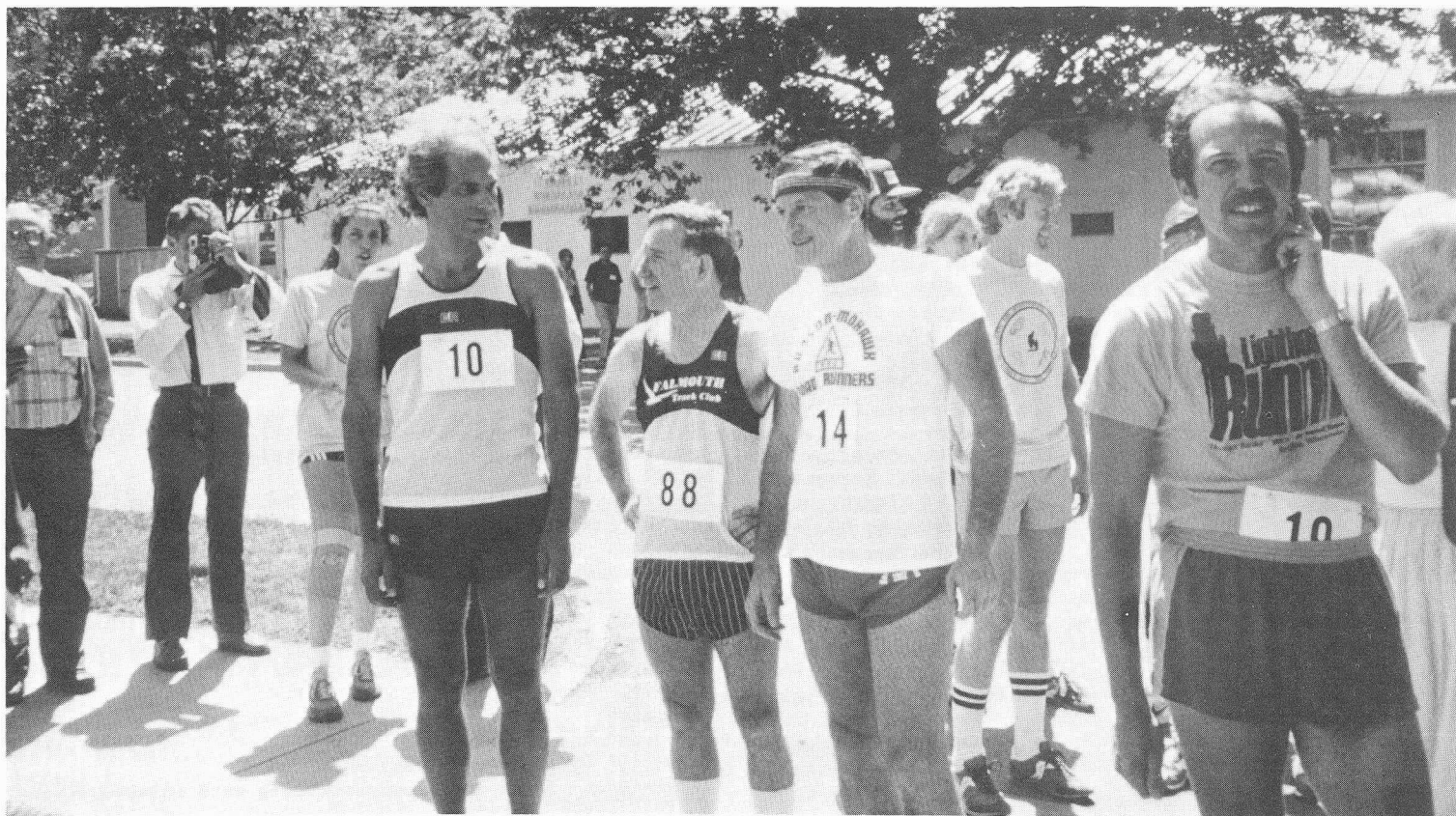
Papers for the Contributed Paper Sessions and Posters for the Davis SIP Meeting are being solicited. Those who intend to present papers are urged to prepare their talks carefully and confine the length of their reports so they do not exceed 15 minutes. Projection facilities for standard 2" x 2" (5.1 x 5.1 cm) slides will be available for the Contributed Paper Sessions.

Those requiring special projection equipment should notify the Program Committee at the time abstracts are submitted. Special audio visual equipment can be arranged. For Posters, the boards will be approximately 1.2 x 2.4 meters. Please plan to man your poster at least one hour. A sample blank with instructions on its back for preparing the abstracts is enclosed with this issue of the Newsletter. Please send abstracts to:

Dr. Donald W. Roberts
Chairperson, Program Committee
Insect Pathology Resource Center
Boyce Thompson Institute
Tower Road, Cornell University
Ithaca, N.Y. 14853 U.S.A.

TENTATIVE SCHEDULE, 1984 ANNUAL MEETING, DAVIS, CALIFORNIA

Sunday August 5	Monday August 6	Tuesday August 7	Wednesday August 8	Thursday August 9
A.M.				
9-12 Council Meeting	8-5 Registration 8:30-10:30 Welcome and Founders Lecture 10:30-12:00 Contributed papers	7-8 Microsporida Division business meeting (breakfast) 8:30-12:00 Symposium: Diseases of cultured non-insect vertebrates 8:30-12:00 Contributed papers	7:00 5 Km Road Race 8:30-10:30 Workshop: Microbial Control Division (Host specificity) 8:30-10:30 Contributed papers 10:30-12:00 SIP Business Meeting	8:30-3:30 Bodega Bay Marine Research Facility tour 8:30-12:00 Contributed papers 10:00-12:00 Workshop: Conducting insect pathology-microbial control short courses
P.M.				
2-6 Council Meeting	8-5 Registration 1:30-5:00 Symposium: Mosquito control 1:30-5:00 Contributed papers 1:00-5:00 Posters	1:30-5:00 Symposium: Comparative virology 1:30-3:00 Workshop: Microsporida Division 1:30-5:00 Contributed papers	12:15-5:30 Wine tour with box lunch	1:30-5:00 Contributed papers
EVE				
7-9 Opening Reception	8:00 Workshop: Safety	Banquet, dancing and/or entertainment	6:00 Chicken BBQ	



Observers and runners in the first SIP 5-K roadrace. Left to right - Tom Angus, John Briggs, Ann Cali, Al Undeen, Marty Shapiro, John Aronson, John Steinkraus and Bob Smith.

WORKSHOP ON TEACHING SHORT COURSES

A number of SIP members have conducted or soon will conduct insect pathology (IP) and microbial control (MC) courses of a few days to a few weeks in all parts of the world, including developing nations. A workshop on organizing and teaching short courses will be held at the SIP annual meeting in Davis. This workshop will afford an opportunity to compare conceptual approaches, laboratory demonstrations/experiments, financing, etc. If possible, please bring schedules, lecture outlines, flyers announcing courses, proposed sites for short courses, etc. of past or planned short courses to share with the group.

Dr. Richard A. Daoust, who is currently living in Brazil, will be the keynote speaker. If you have information you would like for him to consider for inclusion in his address, please send it to him at EMBRAPA/CNPAF, C.P. 179, Goiania-74.000-Goiás, Brazil. If you prefer to deliver your comments in person, please do so. Time will be allotted for short presentations from the floor, and a projector will be available. If you cannot attend but would like a brief note presented in your absence, please send the text to Donald W. Roberts, Insect Pathology Resource Center, Tower Road, Cornell University, Ithaca, NY 14853 USA. For information on the workshop, contact D.W. Roberts.

Slate of Nominees

President	D. Burges
Vice President	J. Harshbarger M. Tripp
Secretary	E. Davidson B. Vinson
Treasurer	J. Fuxa R. Goodwin
Trustee	J. Chadwick J. Couch B. Federici A. Lackie

James D. Harper, Chairperson
Nominating Committee

Biographies

President

H. Denis Burges

Education: B.Sc., Ph.D. 1956, D.Sc. 1983 (London University, UK).

Born: 1927

Experience: Assistant Experimental Officer, Experimental Officer, Senior Scientific Officer, Principal Scientific Officer, Pest Infestation Control Lab., Slough, then Glasshouse Crops Research Institute, Littlehampton, UK, 1970 to present. Visiting worker for one year (1963-64) with the Invertebrate Pathology Group at Berkeley, California.

Membership: SIP member from its conception; Trustee, SIP Council 1976-82; Vice President 1982-84; Chairman of Nominating Committee 1973; Chairman of Committee for Preservation of Bacterial Culture Collections until 1982; Member of the Organizational Committee for proposed Division on Safety of Invertebrate Pathogens and of the Organizational Committee for a Division on Microbial Control; Member, Division for Microbial Control and Division for Microsporidia; Chairman of Steering Committee, Scientific Working Group for Special Programme on Biological Control of Vectors, WHO, 1979-82; Chairman of two study groups in the IOBC to produce advisory guidelines on safety,

one on insect viruses and the other on bacteria; Member of three Committees formulating "Guidelines for Safety Testing Invertebrate Pathogens" for the UK, the European Economic Community and the WHO; Member of the Royal Entomological Society of London; Member of the Association of Applied Biologists (UK).

Interests: General insect pathology specializing in bacteria, fungi, microsporidia and nematodes, the practical use of pathogens for pest control in greenhouses, food stores and against vectors; safety; standardization.

Objectives: Promote the use of pathogens in integrated pest control; encourage SIP to give leadership in all directions, including interactions with other organizations; stimulate international cooperation; regard invertebrate pathology as a whole, ensuring that all groups have fair coverage; organize a drive to increase membership including workers in fringe subjects.

Vice President

John C. Harshbarger

Education: B.A. 1957 (Bridgewater College), M.S. 1959 (Virginia Polytechnic Institute), Ph.D. 1962 (Rutgers--The State University of New Jersey).

Born: 1936

Experience: Insect Pathologist, Insect Pathology Laboratory, U.S. Department of Agriculture, Beltsville, Maryland 1962-64; Assistant Research Pathobiologist, University of California, Irvine 1964-67; Director, Registry of Tumors in Lower Animals and Research Associate, Department of Invertebrate Zoology, National Museum of Natural History, Smithsonian Institution, Washington, D.C. 1967-present.

Membership: Founding Member, Society for Invertebrate Pathology (Newsletter Editor 1969-70; Secretary 1974-76; Member, Permanent Program Committee 1976-81; Member, Glossary Committee 1979-Present; Chairman, Nominating Committee 1980-81); Sigma Xi, The Scientific Research Society (District of Columbia Chapter: Secretary 1975-77; Vice President 1977-79; President 1979-81); International Association for Comparative Research on Leukemia and Related Diseases (Program Committee 1979-81; World Committee, i.e., Governing Board 1979-Present); Fellow, American Association for the Advancement of Science; American Association for Cancer Research; Interagency Collaborative Group on Environmental Carcinogenesis; Southeastern Cancer Research Association; Editorial Board, Journal of Fish Diseases; New York Academy of Sciences.

Interests: Comparative pathobiology of neoplasms and related disorders in invertebrates and ectothermic vertebrates.

Objectives: Strengthen the SIP as the hub for all invertebrate pathologists regardless of nationality, animal group(s) being studied, field of interest, type of research or educational level.

Marenes R. Tripp

Education: B.A. (Colgate University); M.S. (University of Rochester); Ph.D. (Rutgers University).

Born: 1931

Experience: Postdoctoral Research Fellow, Harvard School of Public Health 1958-60; Assistant, Associate, Professor of Life and Health Sciences, University of Delaware, Newark 1960-present.

Membership: Member Editorial Board, Journal of Invertebrate Pathology 1969-76; Representative to AIBS Governing Board 1972-74; Program Chairman 1973; Symposium organizer 1982; Nominations Committee 1982; Marine Biology, U.S. Editor 1974-79.

Interests: Pathology and immunology of marine invertebrates; effects of pollutants on invertebrate immunity; physiology of marine molluscs.

Objectives: To improve communications with related sciences (microbiology, zoology, parasitology) and to stress usefulness of invertebrate pathology in understanding ecological problems.

Secretary

Elizabeth W. Davidson

Education: B.S. 1964 (Mt. Union College, Ohio); M.S. 1967 (Ohio State University); Ph.D. 1971 (Ohio State University).

Born: 1942

Experience: Faculty Research Associate, Arizona State University, Tempe, AZ 1973-present; Instructor, University of Rochester, NY 1972-73; NIH Postdoctoral Fellow, Ohio State University 1971-72.

Membership: Society for Invertebrate Pathology, member since 1968; Local Arrangements Chairman 1974; Nominating Committee 1977; Chairman, Safety Working Group 1980-83; Chairman, Publications Board 1983-88; Member-at-large, Microbial Control Division 1983-84; Editorial Board, Journal of Invertebrate Pathology 1983-86; Entomological Society of America; Sigma Xi; International Organization for Biological Control; American Mosquito Control Association.

Interests: Microbial control of vectors; pathogenesis of insect microbial diseases.

Objectives: Development and promotion of microbial control agents; understanding of the mechanisms by which invertebrate pathogens interact with their hosts; increasing our awareness of techniques and concepts developing outside invertebrate pathology which can be useful in studies of invertebrate diseases; facilitation of communication among invertebrate pathologists in all countries and fields; encouragement of young scientists; preservation and enhancement of the sense of camaraderie and cooperation which characterizes this Society.

S. Bradleigh Vinson

Education: B.Sc. 1961 (Ohio State University), Ph.D. 1965 (Mississippi State University).

Born: 1938

Experience: Associate Professor and Professor of Entomology, Texas A&M University, 1969-present. Assistant and Associate Professor of Entomology, Mississippi State University, 1965-69.

Membership: Society for Invertebrate Pathology; Entomological Society of America (chair of Section B, Program Evaluation Committee, working group on parasitoid-host relationships); American Association for the Advancement of Science; American Chemical Society; American Institute of Biological Sciences; American Registry of Professional Entomologists; American Society of Zoologists; Georgia Entomological Society; Entomological Society of Canada; International Union for the Study of Social Insects; New York Academy of Sciences; Southwestern Association of Naturalists; Southwestern Entomology Society; Gamma Sigma Delta, Phi Sigma, Sigma Xi; Served or serving on Editorial Boards of Journal of Invertebrate Pathology, Journal of Chemical Ecology, Entomologia Experimentalis et Applicata, Archives of Insect Physiology and Biochemistry, and Bulletin of the Entomological Society of America.

Interests: Physiology, behavior and ecology of the parasitoid-host relationship; social insects, particularly ants; pathological effects of parasitism on host insects.

Objectives: Promote improved communication between SIP and other societies with related interests. Encourage active participation in Society affairs by a larger percentage of its members. Strengthen and improve the Journal of Invertebrate Pathology.

Treasurer

James R. Fuxa

Education: B.S. 1971 (University of Nebraska), M.S. 1975 (Oregon State University), Ph.D. 1978 (North Carolina State University).

Born: 1949

Experience: Assistant Professor, Associate Professor, Department of Entomology, Louisiana State University, 1978 to present.

Membership: Society for Invertebrate Pathology: Auditing Committee 1981; Secretary-Treasurer, Microbial-Control Division 1981-83; Chair, Membership Committee 1982-84; Entomological Society of America: Chair-Elect, Subsection Ce (Insect Pathology and Microbial Control) 1983; Chair, Subsection Ce 1983-84; Louisiana Entomological Society: Chair, Membership Committee 1980-82; Georgia Entomological Society; Sigma Xi; Phi Sigma.

Interests: Epizootiology and microbial control, mainly of lepidopterous pests in row crops; general invertebrate pathology.

Objectives: To increase the interest of general entomologists and biologists in insect pathology for purposes other than microbial control alone.

Ronald H. Goodwin

Education: B.S. Entomology 1956 (University of California, Berkeley); M.S. Biological Control 1960 (University of California, Berkeley); Ph.D. Insect Pathology 1966 (University of California, Berkeley).

Born: 1933

Experience: Oakland, CA Public Schools, High School Teacher, 1957-60; Commonwealth Scientific and Industrial Research Organization, Australia, Insect Pathologist, 1966-69; U.S. Dept. Agric., Agric. Res. Serv., Insect Pathology Laboratory, Beltsville, MD, NRC-ARS Postdoctoral Research Fellowship, Insect Pathology, 1969-71; USDA/ARS, Insect Pathology Laboratory, Beltsville, MD, Research Entomologist, 1972-81; USDA/ARS, Rangeland Insect Laboratory, Bozeman, MT, Research Entomologist, 1981 to present.

Membership: Entomological Society of America; Society for Invertebrate Pathology (Charter Member, 1967-present); Membership Committee Rep. (Australia: 1966-69); Journal of Insect Pathology, Member, Editorial Board, 1980-82; Tissue Culture Association 1970-present, Secretary of Invertebrate Division 1978-80, Vice President of Invertebrate Division 1982-84; ICNV (Subcommittee for Invertebrate Viruses) advisor on invertebrate poxviruses 1968.

Interests: General pathology and physiopathology of insects (mainly insect virology; insect tissue culture and insect physiology (nutrition)).

Objectives: Increased awareness and appreciation of the relevance of invertebrate pathology among entomologists and microbiologists; liaison between invertebrate pathologists and invertebrate tissue and organ culturists; promotion of communication, cooperation and interactions between the above disciplines particularly at the international level.

Trustee

June M. Chadwick

Education: Ph.D. 1961 (University of London).

Born: 1929

Experience: Professor of Microbiology and Immunology, Queen's University, Kingston, Ont. Canada, 1978-present; Assistant and Associate Professor 1964-78; Research Scientist, Canada Agriculture 1952-62.

Membership: Canadian Society of Microbiologists; American Society for Microbiology; American Society of Zoologists, Division of Comparative Immunology; International Society of Developmental and Comparative Immunology; Canadian College of Microbiologists; Society for Invertebrate Pathology. Past Member Editorial Board, Journal of Invertebrate Pathology. Member of Editorial Board, Journal of Developmental and Comparative Immunology. Symposium Organizer: Mediator, 2nd ISDCI Congress, Los Angeles, 1983. Member and Vice-Chairman of Principal's Committee on Biohazards, Queen's University.

Interests: Comparative immunology; induction of immune response in insects; mechanisms of microbial pathogens in insects; microbial control agents.

John A. Couch

Education: B.S. (University of Alabama), M.S. (Florida State University), Ph.D. 1971 (Florida State University).

Born: 1938

Experience: Team Leader, Pathobiology Team, U.S. Environmental Protection Agency, Gulf Breeze Laboratory, 1977 to present; Task Leader in pathology, Gulf Breeze Laboratory, 1971-77; Invertebrate Pathologist and Parasitologist with National Oceanographic Atmospheric Administration, Oxford, MD, 1964-71. Adjunct Professor of Biology, University of West Florida, 1975 to present.

Membership: Society for Invertebrate Pathology (ad hoc subcommittee on Virus Collections; representative to International Union of Biological Sciences Subcommittee on Environmental Problems); Society of Protozoology; Southeastern Electron Microscopy Society; Editorial Board of Journal of Invertebrate Pathology; Sigma Xi.

Interests: Comparative pathology and toxicology of aquatic animals; tumors in lower animals; marine ecology; epizootiology of aquatic animal diseases; virology; parasitology; protozoology; zoological systematics of protozoa and parasitic animals; parasitic diseases of mollusks and crustacea.

Objectives: To work toward maintenance of a balance between insect and non-insect invertebrate pathology within the Society.

Brian A. Federici

Education: B.S. 1966 (Rutgers University), Ph.D. 1970 (University of Florida).

Born: 1943

Experience: Professor of Entomology, University of California, Riverside; Assistant and Associate Professor, University of California, Riverside 1974, 1978, respectively; NIH Post-doctoral Fellow, Boyce Thompson Institute for Plant Research 1972-74. Unemployed, 1971.

Membership: Society for Invertebrate Pathology, American Society for Microbiology, Entomological Society of America, American Mosquito Control Association, American Association for the Advancement of Science, Sigma Xi; World Health Organization Committees, Expert Committee on Vector Biology and Control and the Steering Committee on the Biological Control of Vectors.

Interests: Diseases of medically and agriculturally important arthropods, particularly fungal and viral diseases of mosquito larvae and viral diseases of larval Lepidoptera. These interests include pathogen biologies and the development of selected pathogens as microbial control agents.

Objectives: To further relationships among invertebrate pathologists in different countries and to foster interest in invertebrate diseases, focusing attention on the potential contributions the study of these diseases and their causative agents can make to biology.

Ann M. Lackie

Education: Ph.D. 1974 (University of Cambridge).

Born: 1948

Experience: New Hall Research Fellow and Assistant in Research in Parasitology, University of Cambridge, 1972-75; Lecturer in Zoology, University of Glasgow, 1976-present; Visiting Associate Professor, Oregon State University, summer 1983.

Membership: British Society for Parasitology; Society for Experimental Biology; International Society of Developmental and Comparative Immunology; Society for Invertebrate Pathology. Editorial Boards: Parasitology 1977-present; Journal of Invertebrate Pathology 1982-present.

Interests: Insect immunorecognition mechanisms and cell biology of haemocytes; evasion of immunity by helminth and protozoan parasites; pathology of Metarhizium.

PROCEEDINGS OF BRIGHTON MEETING

Copies of Proceedings of the Brighton SIP Meeting (September 1982) are still available. Those interested should contact Dr. H.D. Burges, Dept. of Entomol. and Insect Pathol., Glasshouse Crops Res. Inst., Worthing Road, Rusting, Littlehampton, West Sussex BN16 3PU, U.K.

SYMPOSIUM

ON MICROBIAL CONTROL FOR SPRUCE BUDWORMS AND GYPSY MOTHS
April 10-12, 1984 Howard Johnson's Conference Center,
Center Street Exit at I-91, Windsor Locks, Conn. 06096;
phone: (203) 623-9811

SPONSORS are Northeastern Forest Experiment Station, USDA Forest Service, and the Canada-United States Spruce Budworms R&D Program. The objective for this CANUSA Symposium is to present new information and the state-of-the-art of microbial control for spruce budworms and gypsy moths, for the benefit of forest pest control personnel, consultants, teaching and extension professionals and land managers. Special attention will be given to user needs and problems, the pros and cons of using microbials in insect suppression programs, and recent developments in microbials (B.t., virus, fungi) research. For more information, contact: CANUSA R&D Program, USDA Forest Service, 370 Reed Road, Broomall, PA, 19008. (telephone 215-461-3017).

6th INTERNATIONAL SYMPOSIUM OF ASTACOLOGY,
13-15 August 1984, Lund University, Sweden

Below you will find information on the International symposium on freshwater crayfish.

Abstract of your presentation and the registration fee should be sent in before 15 March 1984.

Main Topics (later to be structured into sessions):

Structure and function
Diseases and defence mechanisms
Aquaculture
Ecology and behaviour
Reports on research and applied experiences

Oral presentations: Invited papers 30 min, submitted papers 15 min (discussion included).

Ms to be considered for publication must be submitted not later than 1 October 1984. Ms which are not delivered before 1 October will not be printed, only the title and the author's name or abstract if available.

POST-SYMPOSIUM EXCURSION to Stockholm-Uppsala, Helsinki and Leningrad.

For more information contact the symposium secretariat.

Information and Registration

6th International Symposium of Astacology
c/o Prof. Per Brinck
Ecology Building
S-223 62 LUND
SWEDEN

Kenneth Soderhall
(Regional Correspondent)

1ST COLLOQUIUM ON PATHOLOGY IN MARINE AQUACULTURE

The 1st Colloquium on Pathology in Marine Aquaculture will be held at Montpellier, France on 11-14 September 1984. For further information contact:

- Dr. A. Rosenfield (U.S.A.)
- Prof. C. Vago (France)
- Dr. B. Hill (U.K.)
- Dr. L. Laubier (France)
- Dr. T. Sano (Japan)
- Dr. P. Wolf (Australia)

POSITION AVAILABLE

Entomologist/insect pathologist: technical position working in laboratory and field evaluation of insect pathogens. B.S. with major coursework in one of the biological sciences and one year of practical experience in entomology, microbiology, insect pathology or related fields. Familiarity with mycological and entomological methods, statistics or insect pathology desirable. Send resume to Dr. George Soares, Mycogen Corporation, 5451 Oberlin Drive, San Diego, CA. 92121.

MARAMOROSCH NAMED
R.L. STARKEY PROF.
MICROBIOLOGY

Five distinguished Rutgers professors whose work represents scholarship of the highest distinction were appointed to named professorships last December by the Board of Governors of Rutgers University.

Named professorships, according to the Board, are a "rare and signal honor, awarded only to the most exemplary faculty members of the highest distinction after the most careful deliberation."

Dr. Karl Maramorosch of the Waksman Institute of Microbiology was named Robert L. Starkey Professor of Microbiology. Maramorosch's career work includes 500 scientific papers and 40 books in the fields of insect virology, plant pathology, and invertebrate tissue culture which have yielded major benefits for food production and human health in developing nations.

He has contributed significantly to current successes in invertebrate cell culture and to the understanding of insect vectors of viruses and other infective agents that cause diseases of plants and animals. The medium developed by Maramorosch and his associates for the culture of insect tissue now is used widely for work on human virus diseases transmitted by mosquitos. He is currently engaged in an attempt to culture the malaria parasite in moquito tissue culture as an initial step toward producing a vaccine that could be used to protect people from infection.

Outside the laboratory, Maramorosch has served as lecturer and consultant to the Food and Agricultural Organization of the United Nations, the Agency for International Development, the National Science Foundation, the U.S. Department of Agriculture, and the National Institutes of Health.

Among many notable awards and prizes won by Maramorosch is the coveted \$100,000 Wolf Foundation Prize in 1980. He has recently been awarded a major grant by the National Institutes of Health and other funding from the World Health Organization of the United Nations to extend his work on the malaria parasite.

The professorship is named in honor of Robert L. Starkey,



Prof. Karl Maramorosch

whose teaching and research career at Rutgers spanned 37 years until his retirement in 1964, during which time he was a close associate of Dr. Selman Waksman for 27 years. Starkey received his master's and doctor's degrees from Rutgers.

Starkey's name is associated with the microbial transformations of sulphur, which have importance in industry as well as for understanding how cells of all types function metabolically. He also performed pioneering studies on how plant growth is influenced by microbial activity and is recognized for providing initial insight into how microorganisms contribute to such electrochemical phenomena as corrosion of metals.

NEW PUBLICATION: SCIENCE SOFTWARE QUARTERLY

The Center for Environmental Studies, Arizona State University, Tempe announces a new quarterly publication, devoted to computer software for natural science applications. Science Software Quarterly will be a 60-70 page publication, and will include:

- . reviews of commercial software with scientific applications
- . an open forum for advertisement of "custom" software designed by working scientists for specialized scientific uses
- . articles on choice, operation and maintenance of scientific software libraries
- . tips on hardware; compatibility, portability, adaptation of software for different systems, peripheral use, etc.
- . classified ads for sale or exchange of used computer hardware and peripherals
- . listings of learning/training resources; books, seminars, tutorials

Science Software Quarterly covers software for microcomputers, minicomputers and mainframes. We are presently looking for

- . reviewers of software and documentation
- . contributors of articles and ideas
- . software designed for use in any natural science field; ecology, agriculture, botany, zoology, environmental science, museum science, etc.

Subscription Information:

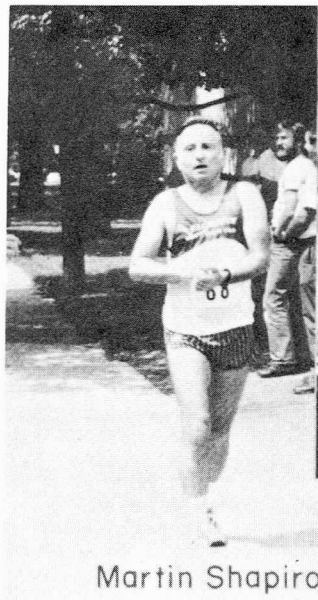
Institution/Organization.....	\$98.00 annually
Individual.....	\$45.00 annually
Individual Charter.....	\$35.00

(subscriptions received before February 28, 1984)
All subscriptions should be paid in U.S. dollars; please add \$12.00 per year for foreign subscriptions. Cheques should be made payable to Science Software Quarterly.

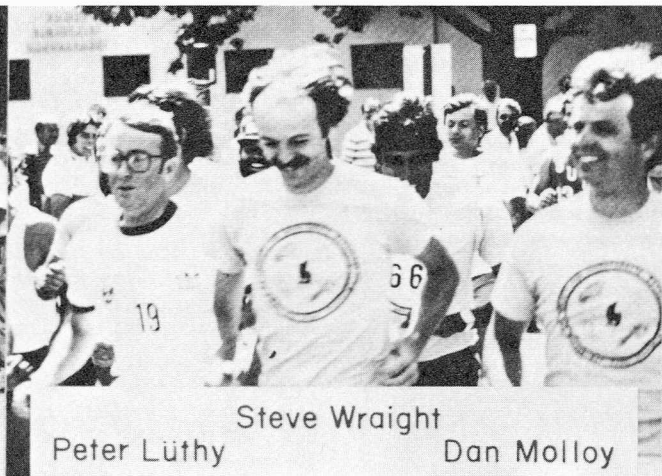
For subscriptions or further information, contact Dr. Diana J. Gabaldon, Center for Environmental Studies, Arizona State University, Tempe, AZ 85287 (602) 965-3051.



The contribution of Ohio State to Invertebrate Pathology was evident at Ithaca. Left to Right, Standing - Ed Hazard, Ann Cali, John Briggs, Doug Streett, Beth-Jane Ellis-Obenchain and Betty Davidson. Seated - Fred Obenchain.



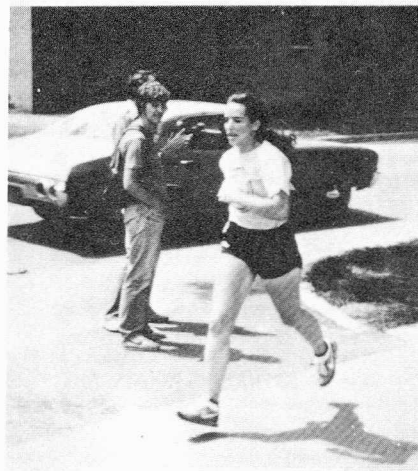
Martin Shapiro



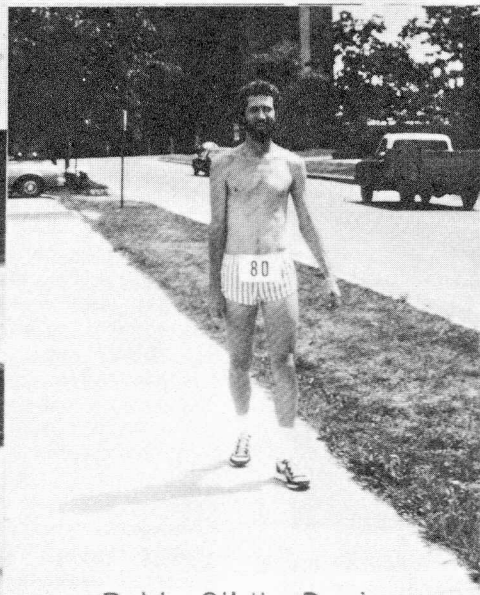
Peter Lüthy Steve Wraith Dan Molloy



Bob Granados



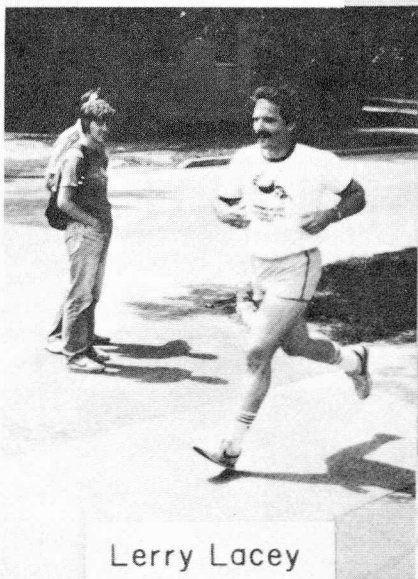
Lorrie Russo



Robin Giblin-Davis



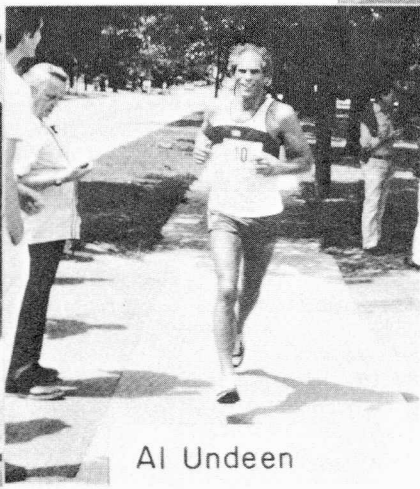
Doug Streett



Lerry Lacey



Hugh Evans



Al Undeen

Some participants who 'enjoyed' the SIP 5K race in Ithaca, N.Y. 1983. Be sure to register for the 2nd annual SIP_5K road race to be held at Davis, Ca. on Wednesday morning Aug. 8, 1984.

CONFERENCE ACCOMMODATIONS AND MEALS
RESERVATION FORM
Society for Invertebrate Pathology
August 5 - 9, 1984

Please complete this form and send directly to: Kathleen Biaggi, Coordinator of Summer and Conference Housing, 118 Student Housing, UC Davis, Davis, California 95616.

Reservation forms must be postmarked by July 6, 1984. Reservations postmarked after July 6th must be accompanied by a Late Reservation Fee of \$5.00/person. See below.

Please make all checks payable to: Regents, University of California, in US dollars.

Name _____ Name of Family Accompanying You _____ Child's Age _____
 Address _____ Spouse: _____
 _____ Children: _____

 Male Female Plan Chosen: A or B _____
 (circle one) Area Code & Telephone Number(s) _____

PLAN A: ARRIVE - SUNDAY, AUGUST 5, 1984; DEPART - THURSDAY, AUGUST 9, 1984 *

<u>ADULT</u>	Double room and meals @ \$107.00/person x _____ persons	\$ _____
	Single room and meals @ \$120.00/person x _____ persons	\$ _____
<u>YOUTH</u>	(11-17 years of age)	
	Double room and meals @ \$ 81.50/person x _____ persons	\$ _____
	Single room and meals @ \$ 94.50/person x _____ persons	\$ _____
<u>CHILD</u>	(10 years and under)	
	Double room and meals @ \$ 59.00/person x _____ persons	\$ _____
<u>CHILD</u>	(10 years and under, in sleeping bag)	
	Meals Only @ \$ 24.00/person x _____ persons	\$ _____
	LATE RESERVATION FEE (after July 6) @ \$5.00/person x _____ persons	\$ _____

PLAN B: ARRIVE - MONDAY, AUGUST 6, 1984; DEPART - THURSDAY, AUGUST 9, 1984 **

<u>ADULT</u>	Double room and meals @ \$ 81.00/person x _____ persons	\$ _____
	Single room and meals @ \$ 91.00/person x _____ persons	\$ _____
<u>YOUTH</u>	(11-17 years of age)	
	Double room and meals @ \$ 61.00/person x _____ persons	\$ _____
	Single room and meals @ \$ 71.00/person x _____ persons	\$ _____
<u>CHILD</u>	(10 years and under)	
	Double room and meals @ \$ 44.00/person x _____ persons	\$ _____
<u>CHILD</u>	(10 years and under, in sleeping bag)	
	Meals Only @ \$ 18.00/person x _____ persons	\$ _____
	LATE RESERVATION FEE (after July 6) @ \$5.00/person x _____ persons	\$ _____

TOTAL AMOUNT ENCLOSED	\$ _____
-----------------------	----------

ROOMMATE REQUESTED _____
 (Last Name) (First Name)

*Includes opening mixer, but not banquet or BBQ. ** Does not include banquet or BBQ.

REGISTRATION

SOCIETY FOR INVERTEBRATE PATHOLOGY
XVII ANNUAL MEETING

University of California
Davis, California
August 5-9, 1984

Please print or type

NAME _____

AFFILIATION _____

ADDRESS _____ /PHONE (AREA CODE) _____

CITY _____ STATE _____ ZIP _____

Arrival date _____ Time _____ Mode _____

Do you plan to bring your spouse, guest or children? Yes _____ No _____

If yes, please list their names (include ages of children): _____

Regular member registration fee: IF PAID BEFORE JULY 6, 1984 - \$40.00 \$ _____

IF PAID AFTER JULY 6, 1984 - \$50.00 \$ _____

Student member registration fee: IF PAID BEFORE JULY 6, 1984 - \$20.00 \$ _____

IF PAID AFTER JULY 6, 1984 - \$30.00 \$ _____

SOCIAL EVENTS (To guarantee food and tours, complete and return no later than July 6, 1984) No. persons

Opening mixer (Sunday Aug. 5, 1984) - \$9.00/PERSON x _____ = \$ _____
(opening mixer charge for those not in residence halls)

Banquet (Tuesday Aug 7, 1984) - \$15.00/person x _____ = \$ _____

Adult BBQ (1/4 chicken) - \$9.00/person x _____ = \$ _____

Child BBQ (10 yrs & under) - \$4.50/person x _____ = \$ _____

Wine Country tour to Napa - \$7.00/person x _____ = \$ _____

Box lunch provided for those in residence hall

Box lunch for those not in residence hall-\$4.50/person x _____ = \$ _____

Total Conference Amount Due \$ _____

Are you interested in Bodega Bay Tour (see SIP Newsletter for information) Yes _____ No _____

Please return this form and check or money order, in U.S. currency and drawn on a U.S. bank, payable to the UC Regents no later than July 6, 1984, to:

Invertebrate Pathology Conference
Memorial Union
University of California
Davis, CA 95616
Attn: Carolyn Norlyn
Phone: (916) 752-2816

See SIP Newsletter for Refund Policy

SECOND ANNUAL SOCIETY FOR INVERTEBRATE PATHOLOGY
5KM ROAD RACE

Wednesday, August 9, 1984, Morning Run*, Davis, CA.
\$6.00 entry fee - includes race plus T-shirt

Send entry form and fee to:

Invertebrate Pathology Conference
Memorial Union
Attn: Carolyn Norlyn
University of California
Davis, CA 95616

Make check or money order payable to UC Regents. Send form with
payment no later than July 6, 1984 so that T-shirts can be ordered.

Name _____

Address _____

City _____ State _____ Zip _____

Age group: under 35 _____ sex: M _____

over 35 _____ F _____

T-shirt size (men's size) S _____ M _____ L _____ XL _____

In consideration of the acceptance of this entry, I agree to assume
all risk of injury to myself and all risk of damage to or loss of my
property arising out of my participation in this race; to release
and forever discharge The Regents of the University of California,
its officers, agents, employees, students and the Society for
Invertebrate Pathology and their members from any and all liability
for any injury including death and for property damage or loss which
may be suffered by me arising out of or in any way connected with my
participation in this race; and for myself, my heirs, executors,
administrators and assigns, to indemnify and hold harmless The Regents
of the University of California, its officers, agents, employees,
students and the Society for Invertebrate Pathology and their
members from all liability claims, demands, actions, loss and/or
damage arising out of my participation in this race.

Signature

* The run will be conducted about 7:00 am to avoid the possibility
of running during the heat of the day.